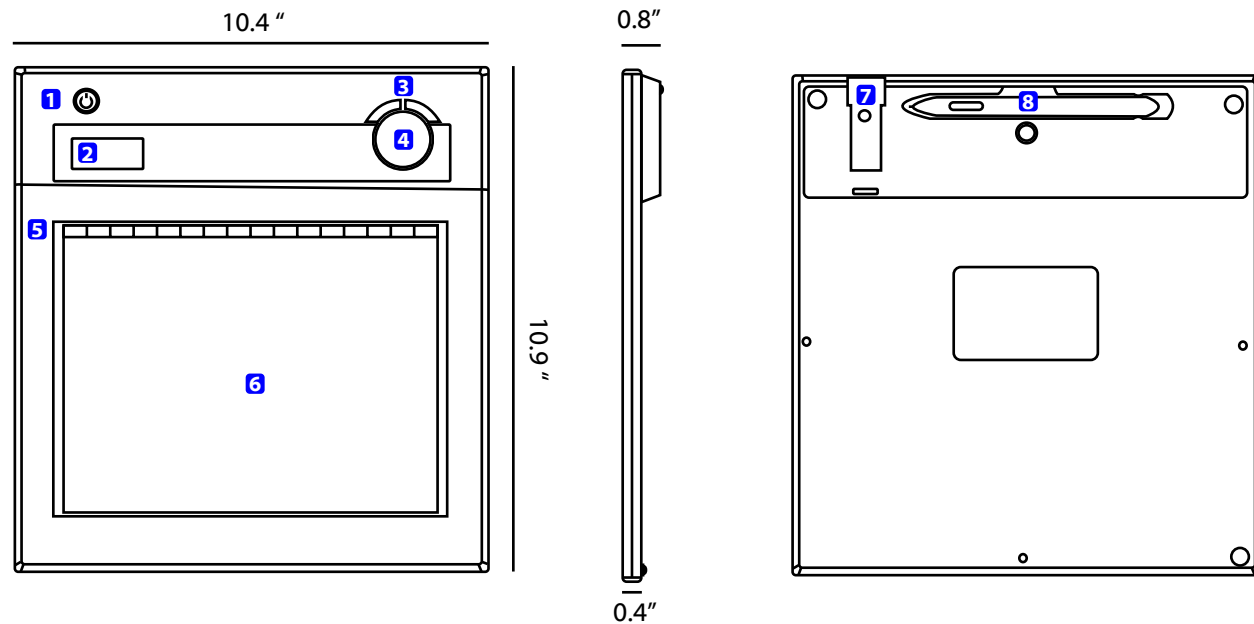


- 1 Power Button
- 2 LCD Display
- 3 Page Up/Page Down
- 4 Volume Control
- 5 Macro Keys
- 6 Active Area (6" x 8")
- 7 Receiver Dongle (built in storage)
- 8 Pen/Stylus (built in storage)

iMM Pad™

Freedom To Present, Your Way.



Technical & Physical Specifications

Wireless Technology	2.4Ghz RF (30' range)
Input Technology	Electromagnetic Induction
Active Area	10" Diagonal (6" x 8")
Resolution	2000 lines per inch
Report Rate	120 points per second
Pen Pressure	1024 levels
Macro Keys	16 Programmable Keys (hot spots)
Quick Buttons	Page Up/Page Down, Volume Control
LCD	TN LCD (17.7 x 40.9 mm)
LCD Icons	Battery Status (4 levels), Connection Mode, Connection Power Status, Volume Status, Tablet ID No.
Battery Type	Nokia LB5C Li-ion Rechargeable
Battery Capacity	800mA
Battery Charge Life	16 hours under continuous use 25 hours under typical use
Recharge Method	USB Cable (included)
Power Consumption	max 50mA (active operating mode)
Receiver Type	USB RF Receiver Dongle
Operating System	Windows 2000/XP/Vista/7; Mac OSX 10.4 and up
Dimensions	10.4"W x 10.9"H x .8" D
Weight	1.3 pounds
Pen Battery	1 x AAA Battery
Pen Dimensions	5" long, 0.54" diameter
Pen Proximity	0.4" above pad
Warranty	One Year

Other
Box includes: 1 tablet, 1 pen, 2 replacement pen stylus tips, 1 pen tweezer (for removing tips), 1 manual, 1 Windows installation CD, 1 MAC installation CD, 1 USB Receiver Dongle, 1 USB Charging Cable, 1 Li-ion Rechargeable batter (installed in tablet), 1 AAA-Battery.

Bundled Software
Onscreen annotation software (PowerPresenter II)
Integration with Windows Vista/7 Tablet PC Features
Integration with Mac Ink (OSX)
Ink Software for XP/2000 Customers

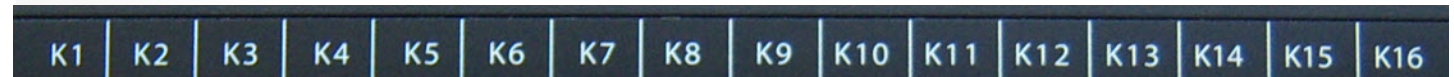
Options
Bundle RM Easiteach with your iMMPad.

Minimum System Requirements
800Mhz Intel (or compatible) Processor
Available USB 2.0 Port
1GB System Memory
Microsoft Windows® 2000/XP/Vista, MAC OSX 10.4+



iMM Pad™

wireless interactive multimedia tablet



MacroKey Information and Setup.

Two default macro-key profiles are preloaded during the installation of your iMMPad. The default profiles may not be changed and are setup to provide the most commonly used shortcuts for Windows 7 users. You may also setup an unlimited number of personal macro-key profiles with each Macro Key defined with the operation, keyboard shortcut, or file link of your choice.

The Default Profiles

Profile Name: DEFAULT_1 or XP_2000

KEY	HINT	SETTING
K1	"New"	Keyboard shortcut: CTRL+N
K2	"Open"	Keyboard shortcut: CTRL+O
K3	"Close"	Keyboard Shortcut: CTRL+W
K4	"Save"	Keyboard Shortcut: CTRL+S
K5	"Exit"	Keyboard Shortcut: CTRL+Q
K6	"Cut"	Keyboard Shortcut: CTRL+X
K7	"Copy"	Keyboard Shortcut: CTRL+C
K8	"Paste"	Keyboard Shortcut: CTRL+V
K9	"Undo"	Keyboard Shortcut: CTRL+Z
K10	"Word"	Link to: WINWORD.EXE
K11	"Excel"	Link to: EXCEL.EXE
K12	"IE"	Link to: IEEXPLORE.EXE
K13	"Outlook"	Link to: OUTLOOK.EXE
K14	"PowerPoint"	Link to: POWERPNT.EXE
K15	"Macro Key Manager"	Link to: MacroControler.exe
K16	"" — this is a user definable key.	

Profile Name: DEFAULT_2 or Vista (This profile is not installed on Windows XP Machines.)

KEY	HINT	SETTING
K1	"Start Inking"	No longer in use
K2	"Cut"	Keyboard Shortcut: CTRL+X
K3	"Copy"	Keyboard Shortcut: CTRL+C
K4	"Save"	Keyboard Shortcut: CTRL+S
K5	"Paste"	Keyboard Shortcut: CTRL+V
K6	"Print"	Keyboard Shortcut: CTRL+P
K7	"Word"	Link to: WINWORD.EXE
K8	"Excel"	Link to: EXCEL.EXE
K9	"PowerPoint"	Link to: POWERPNT.EXE
K10	"IE"	Link to: IEEXPLORE.EXE
K11	"StikyNote"	Link to: STIKYNOTE.EXE
K12	"SnippingTool"	Link to: SNIPPINGTOOL.EXE
K13	"Calendar"	Link to: WINCAL.EXE
K14	"Outlook"	Link to: OUTLOOK.EXE
K15	"Macro Key Manager"	Link to: MacroControler.exe
K16	"" — this is a user definable key.	

iMMPad Macro Key Information & Settings

Making changes to MacroKey assignments

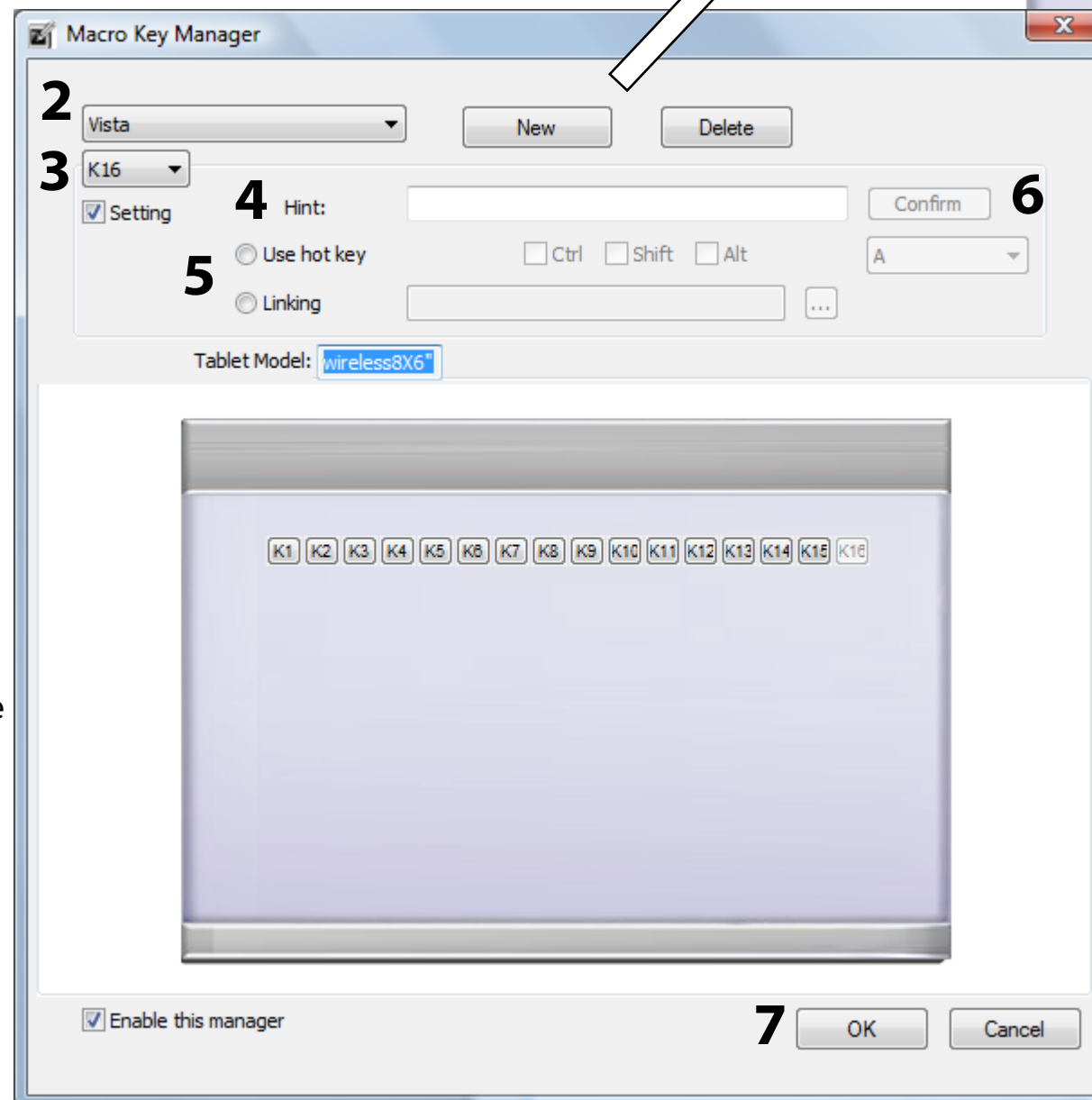
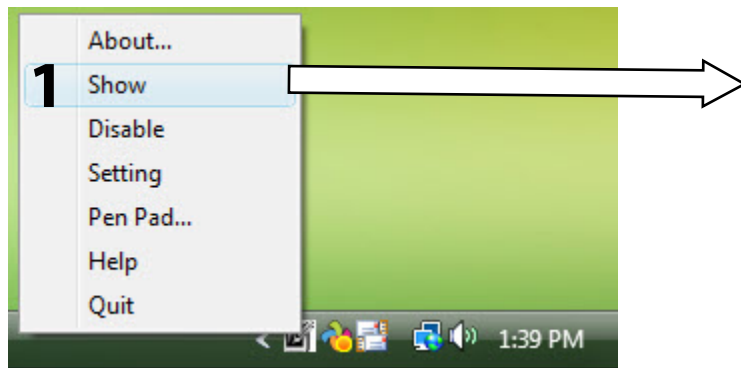
The two default profiles are fixed and the macro keys cannot be modified except for macro key K16.

If the default profiles are not suitable to your needs you may create a new profile and set all 16 macro keys to a custom setting.

The following pages will guide you through setting up the macro keys.

1. Launch Macro Key Manager.

Right click the Macro Manger icon in the system tray (near the clock) and click "Show".



2. Select The Profile to Edit.

Note, to create a new profile click the New button.

3. Select the Macro Key to Edit and then make sure the "Setting" check box is checked.

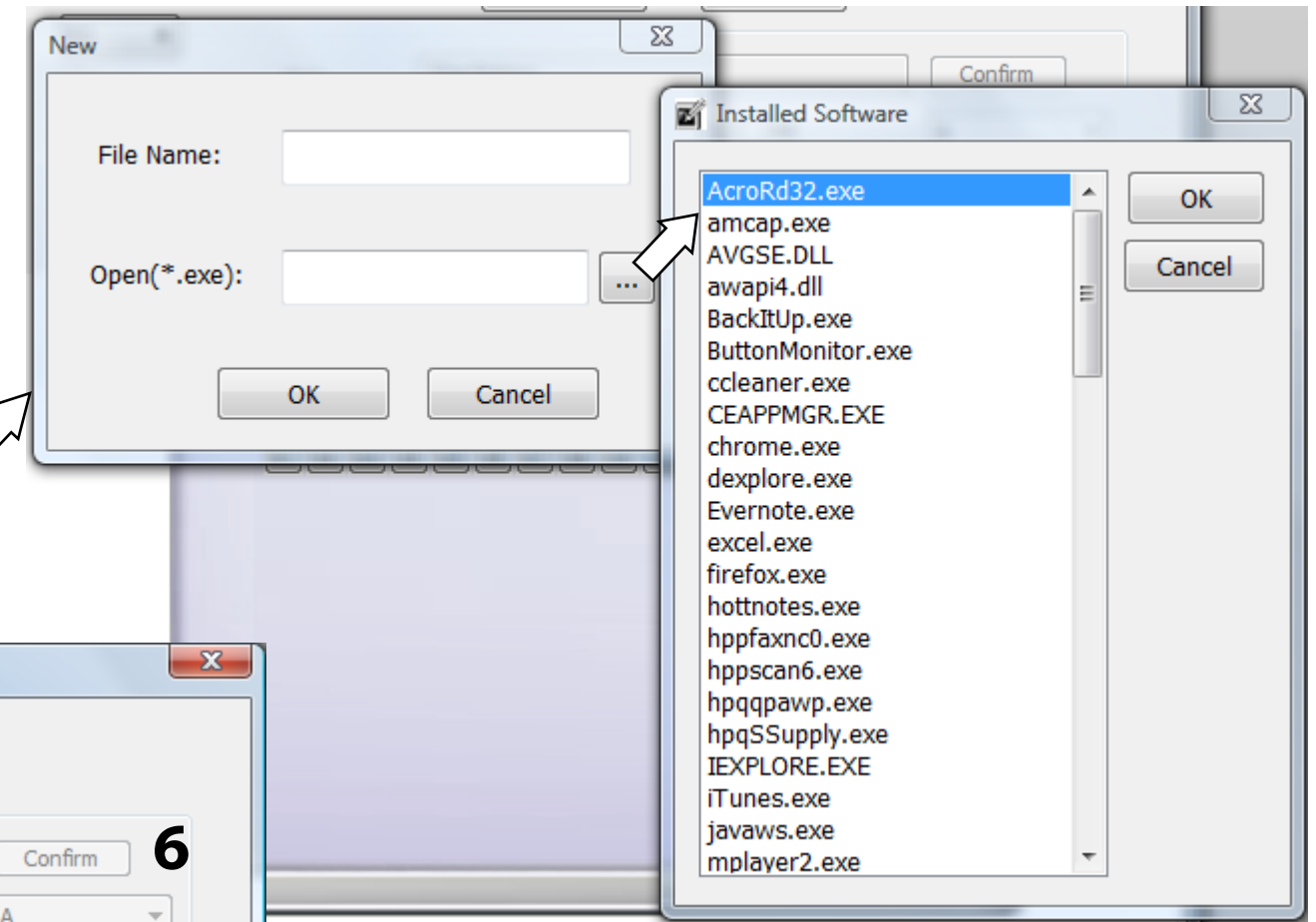
4. Type a Hint for the Macro Key (this will be displayed when the pen is hovering over the macro key).

5. Set the Hot Key combination or the Link to the desired file.

Hot key sample: (I.e. ALT+F4, Close).
Linking example: (lessonplan.doc)

6. Click "Confirm".

7. Click "OK".



TIP: When creating a new profile you have the option to link this profile to a specific application. This is helpful if you are creating a profile with specialized keyboard shortcuts. Keyboard shortcuts do not always perform the same task in every application. So if for example you plan to setup keyboard shortcuts for use with your desktop publishing application then you should select that application from the list. This will cause the macro key to be tied to the application. This will prevent unexpected results should you accidentally launch a macro key when you are not using that specific application.

If you are not setting up keyboard shortcuts that are specific to a particular application then you should leave the Open (*.exe) field blank.

Simply name your new profile and click OK.

TIP: Download the tutorial movie from our web site for additional help setting up the macro keys.

<http://www.recordexusa.com/iMMPadMacroKeySetup.wmv>